

HEALTHY AGING

MENTAL HEALTH

SUBSTANCE USE



*CHIP Vision: An inclusive and well-connected community supporting all people, embracing diversity, ensuring equitable access to services, and creating social, physical, and economic environments that promote health, well-being and quality of life.*

# Waukesha County

## Community Health Improvement Plan Action Team Plan Launch 2024







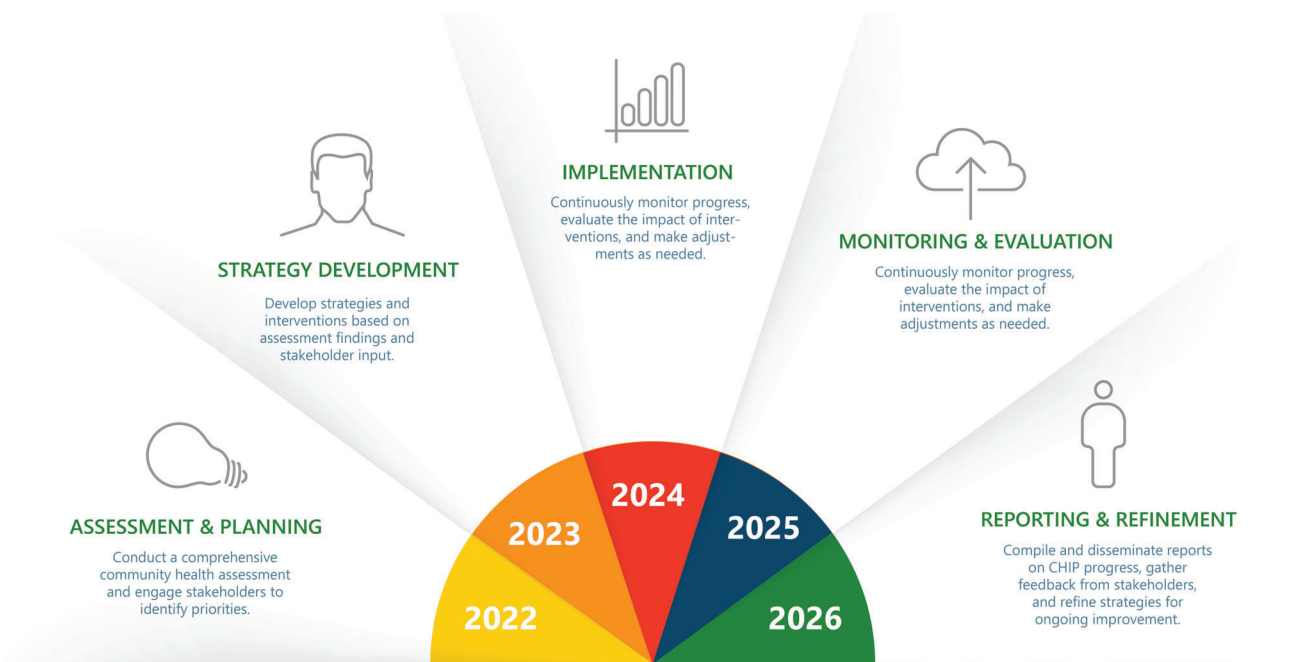
## What is CHIP?

Every five years, Waukesha County Public Health conducts a Community Health Improvement Plan (CHIP) for Waukesha County. The CHIP is a national, comprehensive approach to assessing community health, developing and implementing action plans to improve community health, and monitoring results. In a CHIP, "health" is defined broadly and includes physical, mental, environmental, and other areas that contribute to overall well-being.

A CHIP engages vital community members to systematically collect and analyze qualitative and quantitative health-related data. The findings then inform community decision-making, prioritizing health issues, and developing and implementing action-oriented community health improvement plans.

The process includes using a CHIP Steering Committee for Waukesha County, representing key community sectors, including healthcare, government, nonprofits, business, education, faith-based organizations, and consumers, providing essential leadership over the five-year process. See the back cover of this program for a list of the CHIP Steering, Data, & Design committees.

## Where are we in the 5-Year Process?



## The CHIP Timeline

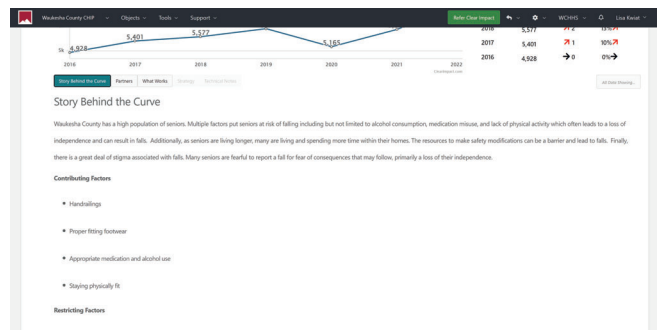
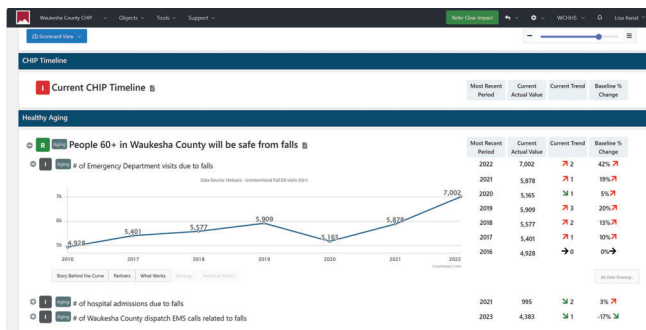
Qualitative and quantitative data drive our decisions in CHIP. The Waukesha County CHIP focuses on sustaining successful interventions, integrating CHIP goals into organizational and community practices, and planning for the next cycle of the CHIP process.

# NEW THIS CHIP CYCLE

## Results Based Accountability, Clear Impact ScoreCard and ARPA Funding for Action Team Plans

### Results-Based Accountability™ Overview:

Results Based Accountability (RBA) is a framework aimed at improving outcomes by focusing on measurable results. In the context of Waukesha County's Community Health Improvement Plan (CHIP), RBA provides a structured approach to assess the effectiveness of strategies and interventions. By utilizing RBA, our action teams can define clear objectives, establish indicators to track progress and evaluate the impact of their actions, ensuring efficient allocation of resources and targeted interventions towards achieving meaningful outcomes for the community.



### Clear Impact Scorecard:

The Clear Impact ScoreCard is an interactive online tool RBA uses to track performance and measure results. It allows stakeholders to visualize data, identify trends, and make data-driven decisions. In the Waukesha County CHIP context, the Clear Impact ScoreCard serves as a central platform for monitoring the implementation of action plans, tracking key performance indicators, and assessing the overall impact on community health. By utilizing this tool, stakeholders can easily communicate progress, identify areas for improvement, and make informed adjustments to their strategies.

### ARPA Funding (\$300,000 available):

ARPA (American Rescue Plan Act) Funding for Action Team Plans refers to allocating federal funding to support implementing initiatives outlined in the Waukesha County CHIP. These funds provide resources to address priority areas identified through the CHIP process, such as improving access to healthcare services, addressing social determinants of health, and reducing health disparities. Our vision is for the strategic priority action teams to collaborate, develop, and implement plans that leverage ARPA funding to achieve measurable results. By aligning these efforts with the principles of RBA and utilizing tools like the Clear Impact ScoreCard, stakeholders can maximize the impact of ARPA funding and accelerate progress toward the goals outlined in the CHIP.

For ARPA funding questions, contact [jbauer@waukeshacounty.gov](mailto:jbauer@waukeshacounty.gov)

**Deadline to apply for grant funding this CHIP: April 24th, 2024**



# Healthy Aging Action Team



**Sarah BUTZ**

*Director of Community Benefit,  
ProHealth Care*



**Mary SMITH**

*ADRC Manager,  
Waukesha County HHS*



**Dave CARROLL**

*PhD, LP, Assistant Clinical Professor of  
Behavioral Health Psychology,  
School of Education & Human  
Services, Carroll University*

## Team Chairs:

## Action Team Members

- |                  |  |
|------------------|--|
| Abigail Lukens   | Waukesha County HHS                        |
| Betty Koepsel    | ADRC Board Member                          |
| Cathy Bellovary  | Citizen Member                             |
| Dan Michaels     | Waukesha County HHS                        |
| Ginger Knapp     | Froedtert Health                           |
| Jillian Smith    | UW - Extension, Waukesha County            |
| Joel Gaughan     | Waukesha County                            |
| Judith Amorsen   | Eras Senior Network                        |
| Katy Maas        | UW - Extension, Waukesha County            |
| Kira Grosenick   | Shorehaven                                 |
| Kristin Beilfuss | Waukesha County HHS                        |
| Lucy Medrow      | Aurora Healthcare                          |
| Lydia Krause     | Waukesha County HHS, ESS                   |
| Mandie Reedy     | Froedtert Health                           |
| Mary Berg        | City of Wauk. Rec Dept. / HHS Board Member |
| Nancy Shea       | Ascension, Elmbrook                        |
| Renee Ramirez    | Community Smiles                           |
| Sarah Pfeiffle   | Waukesha County HHS                        |
| Shawna Boehlen   | Froedtert Health                           |
| Shirley Peterson | Waukesha County HHS                        |
| Suzie Ryer       | Aurora Healthcare                          |



Healthy Aging Action Team, 2023





## 2 END RESULTS DESIRED



### 1 People 60+ in Waukesha County will be **safe from falls**.

#### Data indicators:

- ▼ Decrease number of emergency department visits due to falls.
- ▼ Decrease number of hospital admissions due to falls.
- ▼ Decrease number of Waukesha County 911 calls reporting falls.

#### Strategies:

- 1 Conduct an environmental scan of evidence-based fall prevention programs (such as Stepping On and Ballroom Basics) to expand their availability.
- 2 Create a centralized resource (data repository) for comprehensive fall prevention resources.
- 3 Collaborate with the Waukesha County Falls Prevention Coalition to forge partnerships, distribute resources, and create sustainability.
- 4 Launch an educational campaign that shares community resources to increase awareness and reduce falls.



### 2 All people in Waukesha County will have **social connections**.

#### Data indicators:

- ▼ Decrease number of adults reporting feeling loneliness and isolation from those around them.
- ▼ Decrease percentage of those reporting "poor mental health days."

#### Strategies:

- 1 Conduct an environmental scan of available programs that serve as a conduit for social connections.
- 2 Create a centralized resource (data repository) for social connection opportunities.
- 3 Work with partners to promote and increase awareness of intergenerational skill sharing and adopt community connection models with the intent of creating new opportunities.
- 4 Create a volunteer engagement campaign to increase social connections and social opportunities.



# Mental Health Action Team



## Team Chairs:

**Amanda WISTH**  
*Manager of Community Benefit & Impact, Froedtert Health*

**Amanda HUBER**  
*Supervisor  
 Waukesha County HHS*

**Daniel SHINE**  
*Community Outreach & Education Mgr., NAMI*

**Dhruvi SHAH**  
*Epidemiologist,  
 Waukesha County HHS*

## Action Team Members

- Adria Bollendorf Waukesha County HHS
- Ann Schmitz-Guy Waukesha County HHS
- Attivo Padilla Waukesha County HHS
- Barbra Beck Carroll University, Chair of the Public Health Department
- Brittany Aceto Waukesha County HHS
- Carmen Lugo Rodriguez School District of Waukesha
- Jessica Mieling Glacial Community YMCA (Pabst Farm and Watertown)
- Julia Freuck Waukesha County HHS
- Julie Schumann Ascension
- Karen Villarreal Safe Babies Healthy Families Manager
- Krista McNeil Waukesha County HHS
- Mark Levy Association of Waukesha Congregations
- Mahalia Sobhani United for Waukesha Resiliency Center
- Maria Pieters School District of Waukesha
- Mary Jo Hamman Waukesha County HHS
- Melinda Jacobs Children's Wisconsin
- Michelle Davison Pewaukee School District
- Marissa Baylerian Peer Support-Lived Experience



Terri Phillips facilitates a tri-chair meeting, 2023





# 1 END RESULT DESIRED



1

All adolescents between the ages of 12-18 in Waukesha County will have **improved access** to mental health services and **increased knowledge** of mental health resources.

## Data indicators:

- ▼ Decrease percent of students who self-report depression in Waukesha County.
- ▲ Increase number of youth mental or behavioral health visits.
- ▲ Increase percent of visits by anxiety and depression.

## Strategies:

1

Expand the "Ending the Silence" campaign, to help local school district youth learn about the warning signs of mental health conditions and how to help others.

2

Collaborate with community organizations to conduct a Mental Health Day Awareness day at local school districts to increase the skills to address mental health concerns, improve individual self-care and provide youth with support, tools and resources.

3

Develop and implement a community or school Mental Health Worker model to support care coordination and providing brief therapy and navigation to resources.

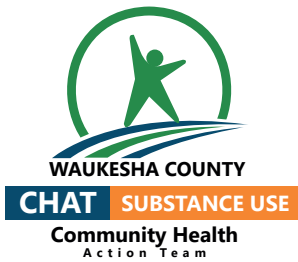
4

Promote mental health hotlines and warmlines to provide support for individuals who are in crisis or just need someone to talk to.

5

Develop an evaluation plan to track the process and data indicators.





# Substance Use Action Team



**Brea LOPEZ**  
Integrated Services Supervisor  
Waukesha County HHS



**Hailey NENONEN**  
Community Outreach Manager  
Aurora Health Care



**Sara CARPENTER**  
Vice-President,  
Wisconsin Community Services



**Stephanie ENGLE**  
Overdose Fatality Review Social Worker  
Waukesha County HHS

## Team Chairs:

## Action Team Members

- |                        |                                  |
|------------------------|----------------------------------|
| Alex Vieth             | Waukesha Food Pantry             |
| Bob Waite              | Impact 211                       |
| Jamie Bauer            | Waukesha County HHS              |
| Jamie Penza            | Waukesha County HHS              |
| Jennifer Hollingsworth | Hebron House                     |
| Jim Burke              | Denoon Recovery                  |
| Julie Schumann         | Ascension                        |
| Karen Sharp            | Department of Corrections        |
| Kathleen Fisher        | Hebron House                     |
| Lazaro Izquierdo       | Waukesha County HHS              |
| Lindsay Just           | Addiction Resource Council (ARC) |
| Page Feller            | Rogers Behavioral Health         |
| Rebecca Luczaj         | Waukesha County HHS              |



Frances Thomas presents to the Steering Committee about results based accountability, 2023





## 2 END RESULTS DESIRED

### **1** People who use or are in recovery for opioid use in Waukesha County have **access to life saving interventions.**

#### **Data indicators:**

- ▼ Decrease number of Opioid Related Deaths for Waukesha County Residents 18-44 years old.
- ▲ Increase number of People Receiving Certified Peer Specialist (CPS) substance use support in Waukesha County.

#### **Strategies:**

- 1** Intentionally coordinate with the Heroin Task Force to educate and promote techniques, resources, and harm reduction strategies.
- 2** Embed stigma reduction training in law enforcement and health care sectors.
- 3** Educate people in substance use treatment about the benefits of Certified Peer Specialists and how to access services.
- 4** Employ people in long-term substance use recovery to become Certified Peer Specialists.

### **2** Waukesha County residents who use opioids have **access to stable housing.**

#### **Data indicators:**

- ▲ Increase percentage of people in substance use treatment who have a stable place to live.
- ▼ Decrease percentage of people who use substances and are experiencing homelessness.

#### **Strategies:**

- 1** Develop a comprehensive asset map of available and accessible housing options in Waukesha County.
- 2** Coordinate with housing coalitions and people with lived experience to collectively develop an advocacy plan to eliminate chronic homelessness.
- 3** Research and promote a substance use housing navigator best practice model.



# Public Health

Prevent. Promote. Protect.

## Waukesha County Public Health

514 Riverview Ave. Waukesha, WI 53188 | 262-896-8430

## Social Media Resources:

@WaukeshaCountyHHS



@WaukeshaCoHHS



@WaukeshaCoHHS



@Waukesha County Health & Human Services



Scan this QR code with the camera on your phone to find all things related to the Waukesha County CHIP



### STEERING COMMITTEE

- Analiese Smith** | Workforce Development Board
- Andrew Dresang** (CO\_CHAIR) | Froedtert Health
- Barbra Beck** | Carroll University
- Benjamin Jones** (CO\_CHAIR) | Waukesha County Department of Health and Human Services
- Bridget Clementi** | Children's Wisconsin
- Dan Baumann** | City of Waukesha Police Department
- Elizabeth Aldred** | Waukesha County Department of Health and Human Services
- Hailey Nenonen** | Aurora Health Care
- Joel Gaughan** | Waukesha County Board Supervisor
- Judith Amorsen** | Eras Senior Network
- Julie Schumann** | Ascension Wisconsin
- Lisa Roberts** | Waukesha County Department of Health and Human Services
- Lindsay Johnson** | Food Pantry Waukesha County
- Liz Stegemann** | Elmbrook School District
- Mark Levy** | Association of Waukesha Congregations
- Mary Madden** | NAMI (National Alliance on Mental Illness)
- Melissa Baxter** | Waukesha County Community Foundation
- Renee Ramirez** | Community Smiles Dental
- Sarah Butz** | ProHealth Care
- Sarah Ward** | Waukesha County Department of Parks and Land Use
- Terri Phillips** | SJD Consulting
- Wendy Harris** | WI BioHealth Tech Hub & Waukesha County Business Alliance

No longer serving the steering committee, we are grateful for the time they gave this CHIP cycle:

- Charles Wiza** | Kettle Moraine School District
- Karen Tredwell** | Food Pantry of Waukesha County

### DATA SUB-COMMITTEE

- Amanda Wisth** | Froedtert Health
- Amanda Weiler** | United Way of Greater Milwaukee and Waukesha County
- Andrew Dresang** | Froedtert Health
- Barbra Beck** | Carroll University
- Benjamin Jones** | Waukesha County Department of Health and Human Services
- Dan Michaels** | Waukesha County Department of Health and Human Services
- Dhruvi Shah** | Waukesha County Department of Health and Human Services
- Frances Thomas** | Waukesha County Department of Health and Human Services
- Jean Schultz** | Community Member
- Jennifer Whitty** | UW Extension Waukesha County
- Sarah Ward** | Waukesha County Department of Parks and Land Use
- Terri Phillips** | SJD Consulting

### DESIGN & COMMUNICATIONS SUB-COMMITTEE

- Andrew Dresang** | Froedtert Health
- Benjamin Jones** | Waukesha County Department of Health and Human Services
- Frances Thomas** | Waukesha County Department of Health and Human Services
- Jamie Bauer** | Waukesha County Department of Health and Human Services
- Lisa Kwiat** | Waukesha County Department of Health and Human Services
- Lisa Roberts** | Waukesha County Department of Health and Human Services
- Liz Aldred** | Waukesha County Department of Health and Human Services
- Terri Phillips** | SJD Consulting

